



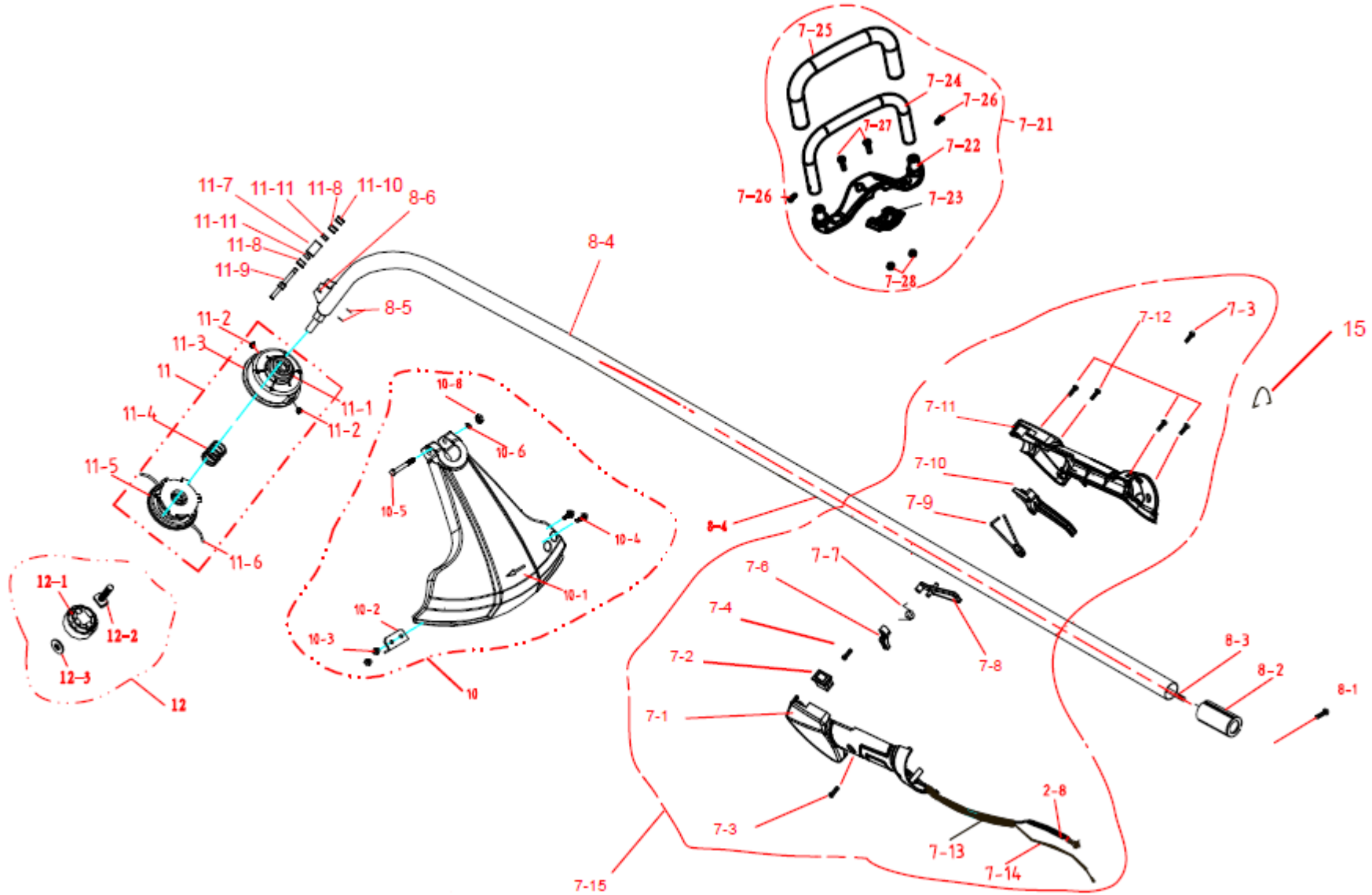
# CREATIVE EQUIPMENT CC

18 Main Road, Fishers Hill, Germiston, 1401  
Tel: 011 828 5085 Fax: 011-828-5085  
[sales@talontools.co.za](mailto:sales@talontools.co.za) [www.talontools.co.za](http://www.talontools.co.za)



## ILLUSTRATED PARTS LIST

MODEL TL25P OUTPUT 25cc  
PRODUCT Talon 2 stroke 25cm³ Petrol String Trimmer





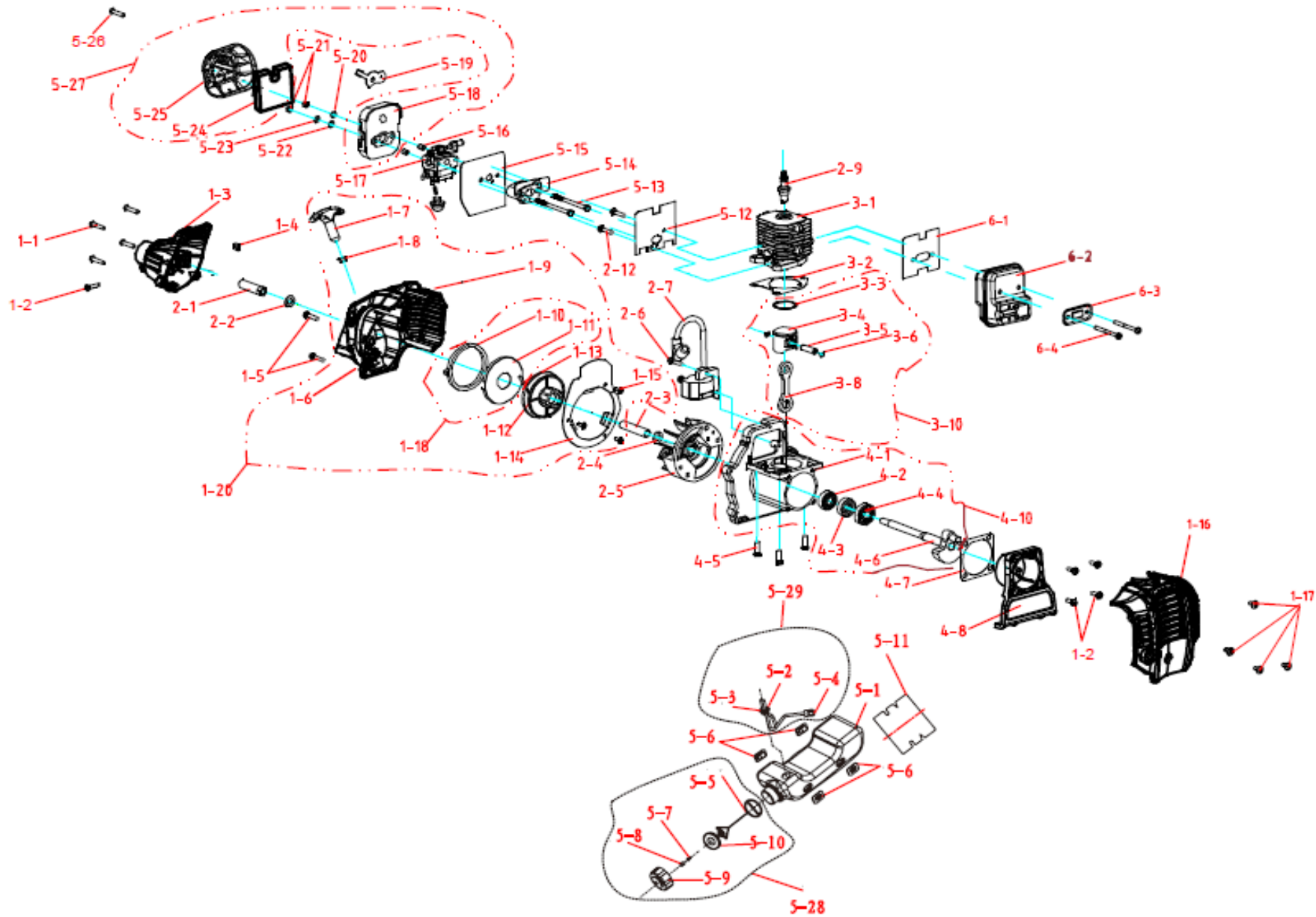
# CREATIVE EQUIPMENT CC

18 Main Road, Fishers Hill, Germiston, 1401  
Tel: 011 828 5085 Fax: 011-828-5085  
[sales@talontools.co.za](mailto:sales@talontools.co.za) [www.talontools.co.za](http://www.talontools.co.za)



## ILLUSTRATED PARTS LIST

MODEL TL25P OUTPUT 25cc  
PRODUCT Talon 2 stroke 25cm³ Petrol String Trimmer



**CREATIVE EQUIPMENT CC**

18 Main Road, Fishers Hill, Germiston, 1401  
 Tel: 011 828 5085 Fax: 011-828-5085  
[sales@talontools.co.za](mailto:sales@talontools.co.za) [www.talontools.co.za](http://www.talontools.co.za)

**ILLUSTRATED PARTS LIST**

MODEL TL25P OUTPUT 25cc  
 PRODUCT Talon 2 stroke 25cm³ Petrol String Trimmer

#	PART #	DESCRIPTION	QTY
1-1	908003	screw M5X25	4
1-2	918007	bolt M5*18	5
1-3	901052	clutch cover	1
1-4	600138350	coach nut M5	1
1-5	600112060	bolt,crosshead M5X23	5
1-6	901088	front cover	1
1-7	600118050	starter handle	1
1-8	903011	spacer	1
1-9	907803	heat protecting film	1
1-10	600118040	starter spring	1
1-11	600118010	spring seat	1
1-12	600118030	starter wheel	1
1-13	600118021	starter rope φ2.5X1080	1
1-14	903017	starter retainer	1
1-15	600118070	screw M4X12	3
1-16	901051	back cover	1
1-17	908002	bolt 4.5*16	4
1-18	600118090	starter spring ,asm	1
1-20	9017-335104	front cover,asm	1
1-21	907801	heat protecting film	1
1-22	907800	heat protecting film	2
1-23	907802	heat protecting film	1
2-1	600112040	connection socket	1
2-2	600142010	wash 8	1
2-3	600133120	tube	1
2-4	600133130	washer 10	1
2-5	600132000	flywheel,asm	1
2-6	600112060	bolt M5X23	2

#	PART #	DESCRIPTION	QTY
2-7	600112160	ignition apparatus	1
2-8	600573010	wire	1
2-9	600113330	spark plug	1
2-12	908012	bolt M5X23	2
3-1	600113310	cylinder	1
3-2	905005	gasket of cylinder	1
3-3	600113260	piston ring	1
3-4	600113250	piston	1
3-5	600113240	piston pin	1
3-6	600113270	piston pin retainer	2
3-8	900032	rod asm	1
3-10	600113200	piston and rod , asm	1
4-1	600113110	crank case	1
4-2	600113130	ball bearing 6001LLU	1
4-3	600113140	oil seal TC28X12X7	1
4-4	600113120	ball bearing 6201	1
4-5	600113340	bolt M6X20	3
4-6	600141000	crank shaft assembly	1
4-7	915003	gasket of crank case A	1
4-8	911009	crankcase cover	1
4-10		crankcase asm	1
5-1	911019	fuel tank	1
5-2	600116050	oil pipe	2
5-3	600116020	oil pipe seat	1
5-4	600116030	oil filter	1
5-5	911030	ring of tank cover	1
5-6	600116070	cushion of fuel tank	4
5-7	931006	air/oil valve	1

**CREATIVE EQUIPMENT CC**

18 Main Road, Fishers Hill, Germiston, 1401  
 Tel: 011 828 5085 Fax: 011-828-5085  
[sales@talontools.co.za](mailto:sales@talontools.co.za) [www.talontools.co.za](http://www.talontools.co.za)

**ILLUSTRATED PARTS LIST**

MODEL TL25P OUTPUT 25cc  
 PRODUCT Talon 2 stroke 25cm<sup>3</sup> Petrol String Trimmer

#	PART #	DESCRIPTION	QTY
5-8	931007	air/oil filter	1
5-9	901070	fuel tank cap	1
5-10	915011	gasket of fuel tank	1
5-11	600116060	heat protect film	1
5-12	600117010	inlet gasket	1
5-13	600117090	bolt M5X68	2
5-14	600117020	carburetor seat	1
5-15	903016	carburetor gasket	1
5-16	600115030	spacer of air filter	2
5-17	600575040	carburetor	1
5-18	600215030	body of air filter	1
5-19	600215040	choke lever	1
5-20	600115040	washer Ø5XØ10	1
5-21	204020001	nut M5	2
5-22	600115070	choke spring	1
5-23	600115060	washer Ø5XØ13.5	1
5-24	600215020	sponge	1
5-25	600215010	cover of air filter	1
5-26	701300031	screw M5*23	1
5-27		air filter ,asm	1
5-28	900047	fuel tank cap,asm	1
5-29	900034	oil pipe,asm	1
6-1	905001	exhaust gasket	1
6-2	600565310	exhaust	1
6-3	600114120	exhaust retainer	1
6-4	600114020	bolt M5X53	2
7-1	901057	control handle,left	1
7-2	600119510	Switch (pastel # 100119190)	1

#	PART #	DESCRIPTION	QTY
7-3	908011	crosshead screw M5X8	2
7-4	600139030	tapping screw St2.9X12	1
7-6	901089	locking block	1
7-7	600412280	lock spring	1
7-8	901090	safety lever	1
7-9	600412270	trigger spring	1
7-10	901091	trigger	1
7-11	901058	control handle,right	1
7-12	600139010	tapping screw ST3.5X15	4
7-13	600139061	wave tube	1
7-14	600576040	trigger cable	1
7-15		handle,asm	1
7-21		seconddary handle, asm	1
7-22	600576052	seconddary handle	1
7-23	600576053	retainer, handle	1
7-24	600576055	tube, handle	1
7-25	600576056	harness, handle	1
7-26	600139010	tapping screw ST3.5X15	2
7-27	908015	screw asm M5*20	2
7-28	702100023	nut M5	2
8-1	201002030	tapping screw M5X13	1
8-2	600310010	dampng sleever	1
8-3	903015	flexible shaft asm	1
8-4	900055	aluminum tube, ASM	1
8-5	600321030	guard rack	
8-6	206010001	rivet	
10	9017-A10101	safeguard asm	1
10-1	600576051	safeguard	1

**CREATIVE EQUIPMENT CC**

18 Main Road, Fishers Hill, Germiston, 1401  
 Tel: 011 828 5085 Fax: 011-828-5085  
[sales@talontools.co.za](mailto:sales@talontools.co.za) [www.talontools.co.za](http://www.talontools.co.za)

**ILLUSTRATED PARTS LIST**

MODEL TL25P OUTPUT 25cc  
 PRODUCT Talon 2 stroke 25cm<sup>3</sup> Petrol String Trimmer

#	PART #	DESCRIPTION	QTY
10-2	600323030	cut off blade	1
10-3	204020001	nut M5	2
10-4	908014	screw M5*16	2
10-5	201002061	inner hex bolts M6*50	1
10-6	205001010	washer 6	1
10-8	204020002	nut 6	1
11	9228-A10105	trim head,asm,right	1
11-1	600324050	trim head ring	1
11-2	600324040	spacer	2
11-3	600324030	trim head body	1
11-4	600324060	spring	1

#	PART #	DESCRIPTION	QTY
11-5	600324010	line seat	1
11-6	600324070	cutting line 2x6.15	1
11-7	600321060	steel pipe	1
11-8	600321080	copper bush	2
11-9	600321090	mandre	1
11-10	600321050	steel bush	1
11-11	600321070	felt packing	2
12	900050	knob assembly,right	1
12-1	600324090	handwheel	1
12-2	203070001	coach screw ,right	1
12-3	600324110	wafer, al	1